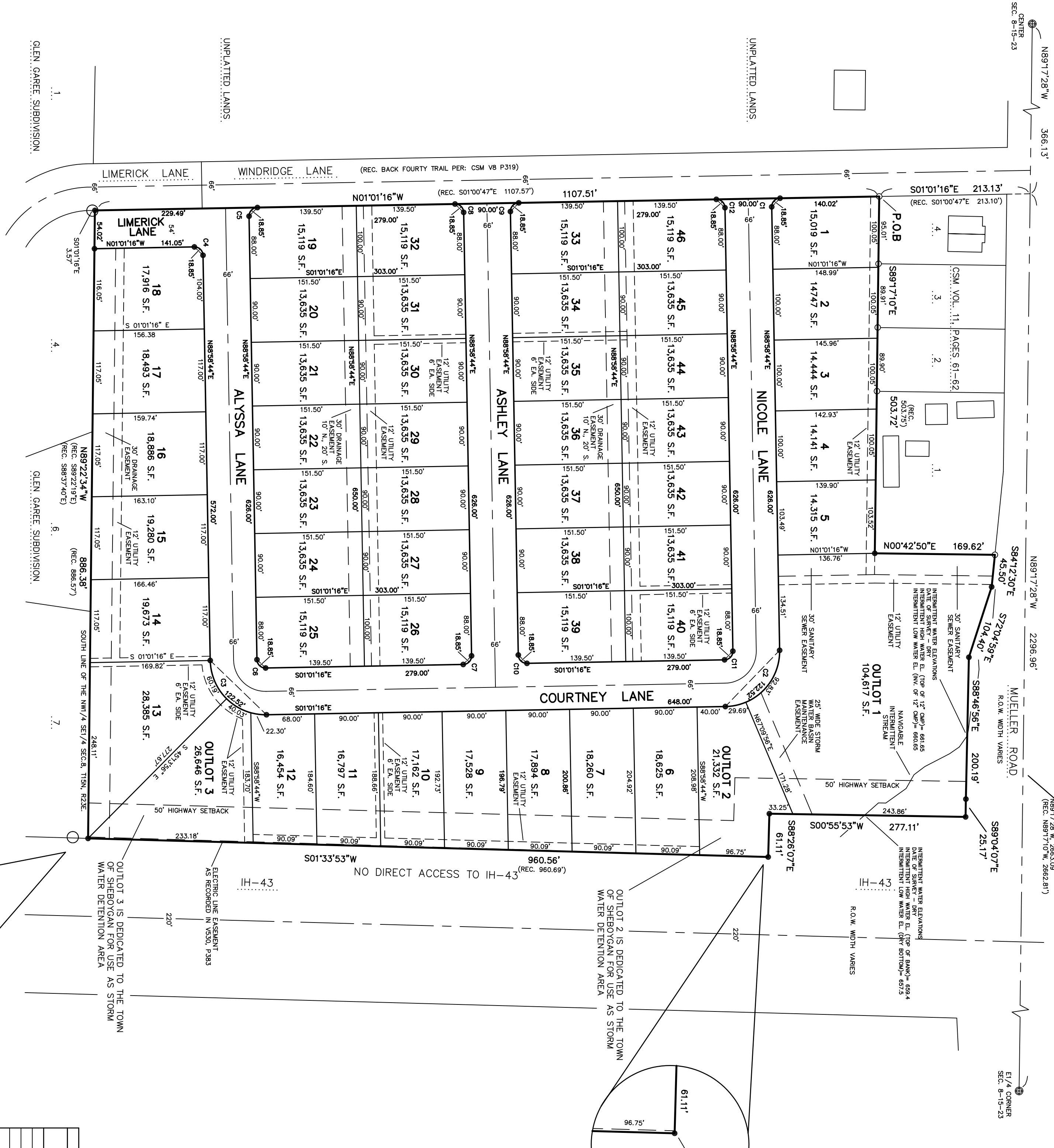


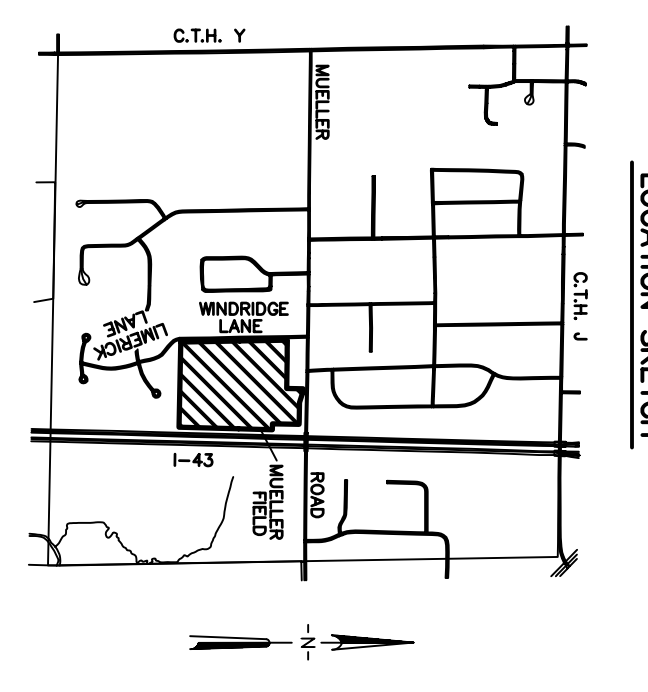
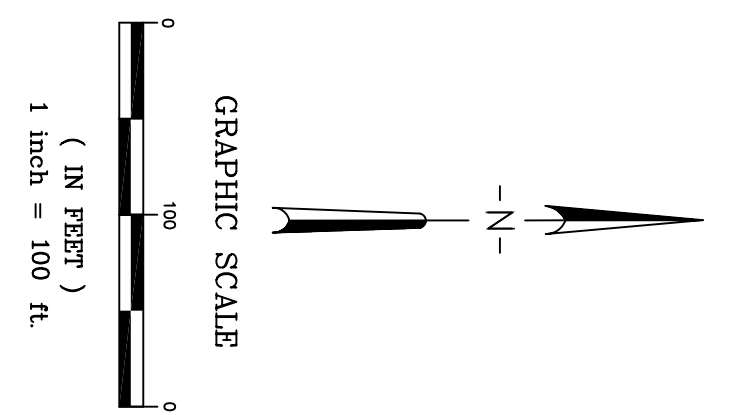
MUELLER FIELD

LOTS 1 AND 2 CSM VOL. 12 PAGES 117-18
 LOCATED IN PART OF THE NW 1/4 SE 1/4 SEC. 8, T15N, R23E
 TOWN OF SHEBOGAN, SHEBOGAN COUNTY, WISCONSIN



- LEGEND**
- ⊕ - GOVERNMENT CORNER FOUND - PK NAIL
 - - 1-1/4" O.D. x 18" IRON REBAR SET WEIGHING 4.2 LBS./LIN. FT.
 - - 1" IRON PIPE FOUND
 - - 2" IRON PIPE FOUND
- ALL OTHER LOT AND OUTLOT CORNERS ARE MARKED WITH 3/4" O.D. x 18" IRON REBAR SET, WEIGHING 1.5 LBS./LIN. FT.

- GENERAL NOTES**
1. ALL LINEAR MEASUREMENTS HAVE BEEN MADE TO THE NEAREST ONE HUNDRETH OF A FOOT AND ALL ANGULAR MEASUREMENTS HAVE BEEN MADE TO THE NEAREST SECOND.
 2. ALL LENGTHS SHOWN ALONG CURVES ARE ARC LENGTHS.
 3. BEARINGS SHOWN HEREON REFERENCED TO THE NORTH LINE OF THE SET 1/4 SEC. 8, T15N, R23E, RECORDED BY COUNTY SURVEYORS OFFICE TO BEAK N8917'28"W.
 4. NO UTILITIES MAY BE PLACED WITHIN 1.00' OF ANY LOT OR PROPERTY CORNER SHOWN HEREON.
 5. BUILDING SETBACK REQUIREMENTS FOR ALL LOTS SHALL BE AS FOLLOWS:
 SIDE YARD - 10' MINIMUM EACH SIDE
 FRONT (STREET) YARD - 10' MINIMUM
 6. OUTLOTS 2 AND 3 ARE DEDICATED TO THE TOWN FOR USE AS STORM WATER DETENTION AREAS AND SHALL NOT CONTAIN HABITABLE STRUCTURES.
 7. THE RESIDENTS OF HOUSES ON LOTS 10-15 AND 24-25 WILL NOT BE SERVED BY THE GRAVITY SANITARY SEWER LATERALS.



CURVE	LOT	RADIUS	CURVE TABLE			ARC LENGTH	CENTRAL ANGLE	TANGENT OUT
			TANGENT IN	CHORD BEARING	CHORD LENGTH			
C1	12.00	S01°01'16"E	346.0716'E	18.97	18.85	90°00'00"	N88°58'44"E	
C2	78.00	N89°58'44"E	110.31	122.52	12.00	90°00'00"	S01°01'16"E	
C3	78.00	S01°01'16"E	54.35844'W	110.31	122.52	90°00'00"	N88°58'44'W	
C4	78.00	S01°01'16"E	54.35844'W	110.31	122.52	90°00'00"	N88°58'44'W	
C5	78.00	S01°01'16"E	54.35844'W	110.31	122.52	90°00'00"	N88°58'44'W	
C6	78.00	S01°01'16"E	54.35844'W	110.31	122.52	90°00'00"	N88°58'44'W	
C7	78.00	S01°01'16"E	54.35844'W	110.31	122.52	90°00'00"	N88°58'44'W	
C8	78.00	S01°01'16"E	54.35844'W	110.31	122.52	90°00'00"	N88°58'44'W	
C9	78.00	S01°01'16"E	54.35844'W	110.31	122.52	90°00'00"	N88°58'44'W	
C10	78.00	S01°01'16"E	54.35844'W	110.31	122.52	90°00'00"	N88°58'44'W	
C11	78.00	S01°01'16"E	54.35844'W	110.31	122.52	90°00'00"	N88°58'44'W	
C12	78.00	S01°01'16"E	54.35844'W	110.31	122.52	90°00'00"	N88°58'44'W	

This instrument was drafted by
MILLER ENGINEERS & SURVEYORS
 409 W. 1st St., Sheboygan, Wisconsin 53081
 Date: September 26, 2006 revised October 27, 2006